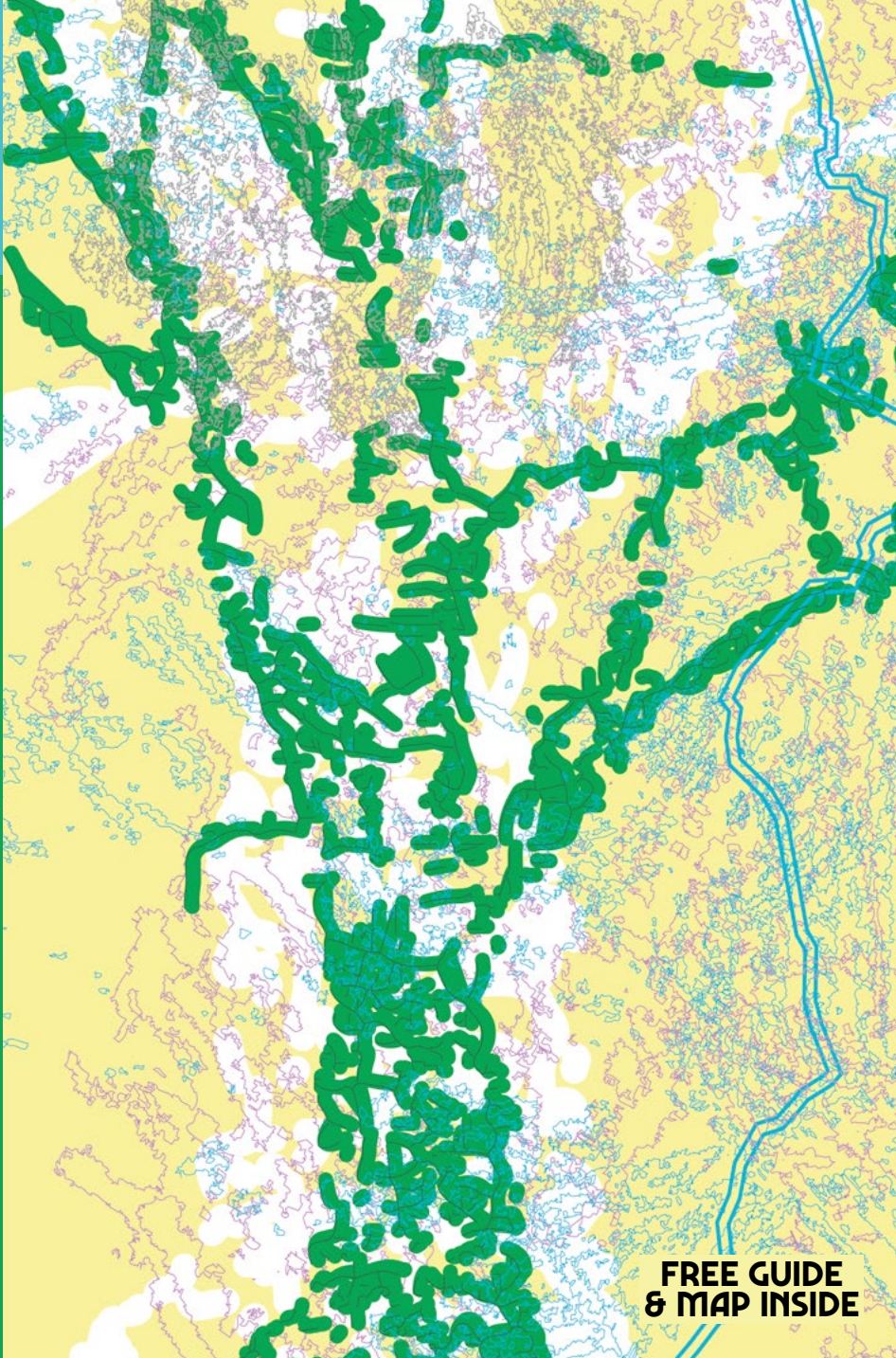


BS4 ARTS TRAIL 2026

Celebrating the creative
community across BS4

13-14 JUNE 2026
11AM-5PM
FREE ENTRY



**FREE GUIDE
& MAP INSIDE**

WELCOME

Welcome to the biggest BS4 Arts Trail yet, showcasing the talents of over 100 incredible artists and craftspeople across south-east Bristol!

Take a stroll through our leafy streets to discover artists in their homes & studios, or exhibiting in community spaces, church halls, shops, cafes & pubs. Chat to the artists, see work in progress and buy directly from the creators. This guide offers an overview of the trail to help you plan your route. Artists are listed by venue; find their

corresponding numbers on the illustrated map in the centre spread, or scan the QR code below to find more info and an interactive map online. Keep an eye out for our venue boards – kindly provided by Eveleighs – to help you find your way.

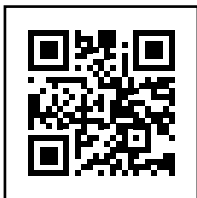
If you want to get creative yourself, we've got workshops, gallery tours and more for all ages across the trail, from printmaking and ceramics to glass art and music – see the workshop pages for a taster, or our website for full details.

**Most venues are open from 11am – 5pm, unless otherwise stated.
The BS4 Arts Trail is free and open to all.**

Accessibility: Community venues are accessible, but please note that many venues are private homes or studios that may have steps, steep slopes, uneven surfaces or narrow pathways that could make access difficult, and there may be pets on site. Accessible public toilets can be found at St Anne's House, St Christopher's Church, St Cuthbert's Church and Martin Parr Foundation.

Please respect people's privacy when visiting home venues. Only enter spaces that are clearly marked as open.

With huge thanks to Eveleighs Estate Agents for sponsoring us again this year, and to Niche Frames for their additional funding. These guides were designed & illustrated in BS4 by Studio Mothership and printed by Taylor Brothers.



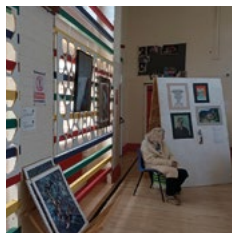
@bs4artstrail
www.bs4artstrail.co.uk



ARTISTS

All info correct at time of print.
Please check the website for any updates.

1



FILWOOD COMMUNITY CENTRE

15 -19 Filwood Broadway, Bristol, BS4 1JN
www.filwoodcentre.org.uk

W

The beating heart of Knowle West for over 80 years. Visit our exhibition of local artists' work, browse our craft stalls, or join a workshop. Come see what we've been making! (Saturday only)

2

HOARD DUNGEONS

9 Redcatch Rd. BS4 2EP

Hoard is an immersive, welcoming community gaming space that opened in Knowle in summer 2025. They've been hosting tabletop gaming events, serving great food & coffee, and slaying dragons ever since! More info and full menu at hoarddungeons.com.

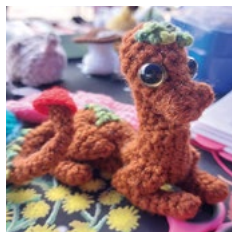
Accessible venue, but please note the toilet isn't quite wide enough for a wheelchair.



CLAIR HONEYBADGER

moosefix.bigcartel.com

Mixed media fantasy portraits and Venetian masks



ACORNUCOPIA TREASURES

www.instagram.com/acornucopia.treasures

I make crochet creatures, mythical beings, and little fellas to bring joy to people. I have a cute, whimsy vibe and take inspiration for table top role playing games like dungeons and dragons.

2

HOARD DUNGEONS



STARRLIGHTCREATES

www.instagram.com/starrlightcreates

Starrlighcreates is a whimsical illustrator creating products like charms, pins, stickers, and misc other items to the theme of circus' or magic.

3



MARTIN PARR FOUNDATION

316 Paintworks, Bristol, BS4 3AR

W

Free entry photography gallery with an exciting programme of events, rotating exhibitions, our annual festival and more; supporting the photography community and preserving the legacy of Martin Parr.

4

ST CHRISTOPHERS CHURCH

Hampstead Road, BS4 3HN

W

Beautiful church hall near Arnos Vale, hosting 16 talented local artists & makers, plus food & drink and family mask-making workshops from Let's Make Art.

See workshops page for more info. Accessible venue.

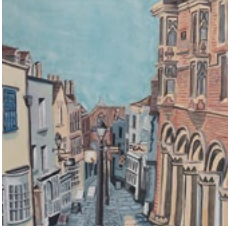


BRISTOL BASKETS

www.instagram.com/bristolbaskets

Contemporary basketry, weaving willow grown on the Somerset Levels and on a shared Bristol allotment. Practical and sculptural baskets, decorative garden ornaments.

ST CHRISTOPHERS CHURCH

**SUSIE RAMSAY ART**

www.susie-ramsay-art.com

Bristol artist specialising in architectural city scenes in pen, watercolour and acrylic. The artwork focuses on Bristol's Old City and is available as limited edition giclée prints and cards.

**CHRISTINE IRONSIDE**

My work is mainly watercolour and oils, some pastels. I like Botanical style subjects and some landscape mainly.

**LUCY BAIK**

www.etsy.com/shop/Lucylinoprints?ref=dashboard-header

Linocut printmaker & illustrator. Exploring the meeting points of urban structure and nature, weaving subtle narrative and symbolism into familiar landscapes and reimagining them with quiet wonder.

**NANNIE ANNIE'S CREATIONS**

www.facebook.com/Nanny-Annies-Creations-656772481332252/

Home made Childrens clothes in bright fun fabrics (Sunday only).

**ADRIAN VYE**

www.instagram.com/adrianvyeart

Watercolour and oil painter of various themes including animals birds, still life and illustration. Framed and unframed.

**ABI ELERI**

www.abieleri.com

Growing up in rural Snowdonia gave Abi a deep love and fascination for the natural world. Expect to see the ebbs and flow of watercolour meeting the tight line and detail in each creature Abi paints.

**WENDA BARTLETT ARTS**

www.wendabarts.com

I am a printmaker, using several different methods such as lino cut, etching and collagraph, to achieve individual hand made prints. Main subjects are landscapes, coastal scenes and animals.

**LUE & CHOO**

www.etsy.com/uk/shop/Lueandchoo

A lover of homemade crafts and thoughtful gifts, specialising in personalised greetings cards and handmade creations. Each piece is carefully made to feel personal, unique, and full of character.

**LYN PROSEN UPHOLSTERY**

www.lynprosenupholstery.co.uk

Stylish chairs and more, individually crafted with character. An award-winning upholsterer revitalising vintage and modern furniture through traditional and modern upholstering techniques.

**RICHARD GIBSON**

richardgibsonartist.co.uk

Working in oils on canvas, Richard paints the products of the organic world utilising colour, design and brushwork to endeavour to embody the vitality and vividness of nature.

**LOUISE BOULTON**

www.louiseboulton.co.uk

I produce drawings from life of the natural world which are developed into screenprints and etchings printed in small editions. I will be showing my recent work of Portuguese flora.

**KATY SPENCER**

My prints and drawings cover themes of nature, landscape and the environment, and over the last year I've been taking inspiration from sketches drawn while walking the South West Coast Path.

**SARAH RAY**

www.sarahrayshop.co.uk

Sarah Ray's fun & whimsical illustrations offer something a bit different. She produces a range of greetings cards and gifts that comment on everyday life and its idiosyncrasies to make anyone smile.

**JUNE HOY**

I am a multimedia artist and was inspired by Pail Klee and Francis Bacon. I join up images to produce oil transfers then paint in watercolour. Sometimes I have painted in oils.

**PAUL FARMER**

Prolific local water colour artist creating bold and colourful wildlife paintings

5



THE SOURCERER AND THE ART OF HOUSEKEEPING

The Garden Studio, BACK of 9, Runswick Rd, BS4 3HY
www.instagram.com/_thesourcerer

Ceramic artist restoring broken and overlooked objects to explore memory and resilience. I run Kintsugi workshops. I research sustaining creativity in the community through Social Enterprise. Entry through back garden via lane between St Christophers Church & Renatec Garage.

6



4 ART

92 Runswick Road, BS4 3HZ

4 Art will be exhibiting a range of Arts and Crafts including paintings of Bristol in various formats such as cards, posters, Collage portraits, and Unusual Decorative Engineering.

7



LINDSEY KING DESIGN

Garden Studio, 9 Queensdown Gardens, Bristol BS4 3JA
www.lindseyking.co.uk

Lindsey designs fabrics and makes colourful art prints inspired by nature. Her work features gicleé prints, original gouache paintings and vibrant Risograph prints.



THE JOYFUL REBEL

Garden Studio, 9 Queensdown Gardens, Bristol BS4 3JA
www.thejoyfulrebel.co.uk

Designer-maker creating handmade jewellery and creative kid's craft kits, combining playful design with quality materials to inspire imagination, hands-on making, and meaningful, memorable gifts.

8



THE CORBEAU PRESS

The Garden Studio, 19a Queensdown Gardens, BS4 3JA
www.thecorbeaupress.com

Hand engraved glass inspired by the ephemeral beauty of nature in a beautiful garden studio.

9



DONA B DRAWINGS

18 Harrow Road, Brislington, Bristol BS4 3NE
dona-b-drawings.co.uk

Discover Dona B's quirky & colourful Bristol hand-drawn & digital illustrations available as prints, cards, gifts & homewares. Find out about how she creates her work & how she came to be Dona B too. Enjoy tea & cake in the garden in aid of Bristol After Stroke.

10



EMMA LUCY MCARTHUR ART

40 Harrow Road, Brislington, BS4 3NE
emmalucymcarthurart.square.site



I am a printmaker, using lino to create detailed linoprints, inspired by anatomy and the human form. I like to explore the beauty and structure that lies within all of us through linoprint.

11



ANGELA DAVIES DESIGN

44 Harrow Road BS4 3NE
www.instagram.com/angeladaviesdesign



Illustrator & designer exploring home printmaking with recycled materials. I share etchings and relief prints inspired by our shared local heritage, sacred spaces, nature and the everyday.

12



FRIENDS OF HOLYMEAD PRIMARY SCHOOL

The Hub, Holymead Primary School, Rossall Rd, BS4 3NR
www.holymeadp.bristol.sch.uk



Through colour and storytelling, this exhibition shows what community means to Holymead's children — the friendships, cultures, places, and connections that shape their world and sense of belonging. Plus refreshments & kid's crafts!

13



KIN

14 Sandy Park Rd, BS4 3PE
www.instagram.com/Kinsandypark

Pitstop at KIN for drinks and some proper lunch! Plus some incredible local artists will be taking over our walls! Bring the whole fam and make a day of this awesome community event.

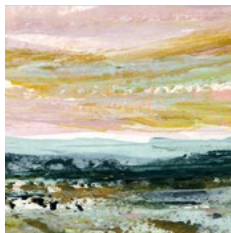
14



THESE TWO HANDS

83 Sandy Park Road, Bristol, BS4 3PG
thesetwohands.co.uk

These Two Hands is where the BS4 Arts Trail began. Discover a unique curated collection of handcrafted, nature-inspired gifts and homewares made by over 80 small independent artists and makers.



LOUISE LEVINE

83 Sandy Park Road, Bristol, BS4 3PG
louiselevine.co.uk

Louise Levine is a seascape artist, capturing the vast space, raw beauty and wild peace of the sea, bringing you a moment of peace as you're transported back to the ebb and flow of the waves.



ANNABELLE CLAY

83 Sandy Park Road, Bristol, BS4 3PG
annabelleclayart.etsy.com

Watercolour paintings capturing everyday places and moments, inspired by walking, slowing down and taking it all in. Especially in love with Bristol!

15



NICK HOPE

26 Sandgate Road, BS4 3PS
www.instagram.com/nickhopeartist

Nick Hope's vibrant, abstract paintings hint at his background in lighting design & club visuals. Multi-layered lines portray a thought, a memory, a movement, and follow a simple, natural flow.

16



LITTLE LEAF PRESS

No longer available for the trail.

See littleleafpress.co.uk for all work and printmaking workshops.

St Anne's Road BS4 4AB

St Anne's Open House launches on Friday evening, with food, drink, music and more from 7pm-late. Exhibitions, workshops, open studios and artist's stalls all weekend, plus Bristol Community Sauna, food and drink.

Open 11am-4pm all weekend.

Accessible venue. See stanneshouse.org for full details.



PRINT & EPHEMERA

www.printandephemera.co.uk

Letterpress stationery, limited edition prints, notebooks, cards and other ephemera all produced by hand in Bristol on Victorian presses. I also offer bespoke commission services and workshops.



BECCA THORNE

beccathorne.co.uk

Linocut printmaker/illustrator specialising in nature, history & folkloric prints full of life. Recent illustration work includes Hamnet for The Folio Society & Tales of St Helier stamp series for Jersey Post.



KAYLENE ALDER

www.kaylenealder.com

Kaylene is an artist/illustrator with a colourful and expressive illustrative style who loves to work with botanical forms wherever possible. Her current painting series is about hope and resilience.



STEVEN OWEN

www.stevenjohnowen.uk

Bristol based painter Steven John Owen works between abstraction and still life. His paintings are defined by dark tonal palettes and a focus on composition, surface, and colour relationships.

**INGSU JEWELLERY**

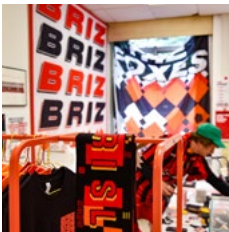
www.instagram.com/ingsu_jewellery

I'm passionate about creating quality, handcrafted jewellery. It's made from recycled metals and materials. Ingsu jewellery is inspired by nature, elegant but simple enough to be worn every day.

**VICTORIA WILLMOTT**

www.victoriawillmott.com

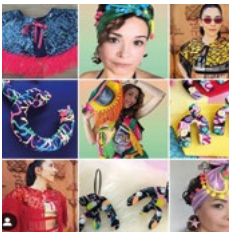
Victoria Willmott is a linocut printmaker and workshop artist. She designs prints from her drawings of life. From birds in flight to cityscape sketches, narrative maps and harbourside prints.

**BRIZ X BORG X KELHAM**

linktr.ee/brisxborgxkelham

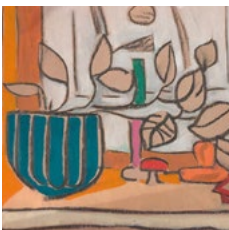


Borg & Kelham are currently collaborating as designer & artist in residence at Brislington Football Club. Returning for the second year at the trail this year they will be taking over a different space at St Anne's House. Expect Briz merch, activities and a chance to design graphics for the stadium!

**CHIKA CHIKA**

chikachika.co.uk

Chika Chika is a vibrant slow-fashion brand making bold handmade jewellery and festival wear from repurposed fabrics. Colourful, playful and one-of-a-kind.

**TUBECOMIX STUDIOS**

www.shounharrigan.com/tubecomixstudio

This current style has developed from a sketch a day practise, mainly observational sketches in acrylic or ink on ply. Responses to my world.

**PIRRIP PRESS**

www.pirripress.bigcartel.com

Pirrip specialise in screenprinting, making cards, zines, prints and more with a bold, colourful aesthetic and a nod to vintage design, inspired by our love of the outdoors.

**EMMA GEEN**

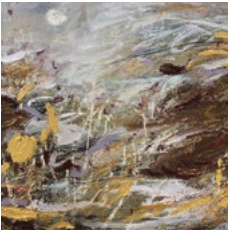
emmacgeen.wordpress.com/pet-portraiture

Emma Geen works in acrylics and charcoals. She takes portrait/pet commissions and also paints fantastical and narratives scenes. She sells hanging decorations that function as cards.

**GRACE RUDDICK**

www.graceruddickart.co.uk

Grace is a self-taught oil painter based in Bristol, UK. Her work mainly focuses on still life and the British landscape, with an aim to capture the quiet beauty of favourite places.

**SKY SIOUKI**

skysiouki.com

Sky's mixed media paintings explore how the seasonal changes and incredible magic and beauty of nature can ground us, move us, give us hope and remind us of our place in the universe.

**ANNA MARROW**

www.annamarrow.co.uk

I make limited edition screen prints inspired by modern urban life. I work with a combination of drawn, painted and photographic marks to create surreal, surprising narratives.

17

ST ANNE'S HOUSE**SARAH QUINN**

www.etsy.com/uk/shop/SarahQuinnArt

I am a lino printmaker and my practice is rooted in the strange and captivating visual language of medieval art and folklore. I create bold single-colour, and colourful prints on handmade paper.

18

**WENDY CALDER CERAMICS**

62 Arlington Rd, St. Annes, Bristol BS4 4AJ
wendycaldceramics.com

W

Functional earthenware ceramics with nature inspired surface decorations, created by monoprint and sgraffito techniques. I also run Pottery courses, workshops and potters wheel sessions.

19

**CLAYBIRD**

68 Newbridge Road Bristol BS4 4DL
www.etsy.com/uk/shop/claybirdshop

I enjoy experimenting with slip and plant ash to create abstract landscapes or a simple dash of colour. I am inspired by Geological landscapes and surfaces. I like my pots to be tactile and useful. Cutters & mark-making for kids while you peruse!

20

**EMILY DENNYS CERAMICS**

The rear of Elm Cottage, St Annes Terrace, BS4 4DY
www.emilydennysceramics.com

Handmade Porcelain lamps, vases and wall panels featuring relief casts of leaves, flowers, grasses & ferns.

THE LANGTON

Langton Court Rd, Bristol BS4 4EG

Popular local pub, cafe & restaurant hosting 14 artists in the ground floor skittles alley. Food and drink served from mid-day all weekend, including banging roasts on Sunday!

Booking recommended for food - see thelangtonbristol.co.uk for menu and reservations.



FORAGED SMITH

www.foragedsmith.co.uk

Foraged Smith started when I was a lorry mechanic apprentice, welding lorries sparked a love for metal. I work with recycled or 'foraged' materials when possible, I primarily use recycled silver.



BISOU

bisoubysamanthaalton.etsy.com

Bisou by Samantha Alton creates handcrafted polymer clay jewellery designed to celebrate individuality, confidence and self-expression through unique, stylish and hypoallergenic pieces.



KELLY'S KWERKIES

www.instagram.com/kellyskwerkies

I upcycle discarded clothing and textiles to give them a new life as bags and home decorations. I also create beautiful crocheted hats, bags and other accessories from donated and neglected yarn.



JANETTE LYONS AND EVELYN SMYTHE

I do diamond art products cards, pictures, bags, keyrings and other products. My mum does knitting toys and knitted accessories



KEEVIL DESIGN

www.facebook.com/nik.creative.designs

I blend strong design sensibility with hands-on making to create warm, tactile pieces that honor natural materials and quiet detail. My work reflects patience, curiosity and a deep love of process.



THE SHED COLLECTION

www.theshedcollection.com

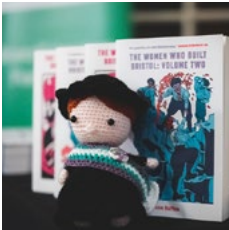
We have been hand crafting high quality long lasting vegan friendly home fragrance products since 2021 - reed diffusers, candles, room sprays, clay discs for oils, oils, scented sachets & wax melts.



BUGS & LEAVES COPPER CRAFT

www.bugsandleaves.com

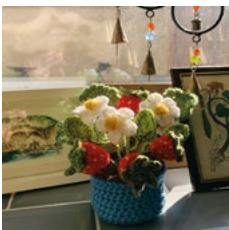
I make nature-inspired designs using copper from recycled electrical cables. My products are purposely small and affordable and express my love of woodlands



THE WOMEN WHO BUILT BRISTOL

www.janeduffus.com

With The Women Who Built Bristol book series, author Jane Duffus celebrates more than 750 extraordinary - but overlooked - stories of women from our city's past.



THISTLEANDTWINE

www.instagram.com/thistleandtwine1996

I am inspired by nature, and my crochet style is based on bringing it into the home! I make pieces such as decorations, cushion covers, bunting, and crochet plants and flowers.

**BECKY LOADES POTTERY**

www.instagram.com/beckyloadespottery

Fun and functional ceramics that bring a bit of joy into your every day.

**LIZZIE ADSETT**

www.instagram.com/adsetty

I am a landscape photographer, making prints, photobooks and zine of natural spaces both local and further afield. I also create small, decorative woven sculptures made from natural materials.

**AMY THORMAN ART**

www.amythormanart.com

Specialist in paintings and fine line drawings. Amy explores our relationship to the built environment, nature, and communities. Fine art prints, greetings cards, and journals will be available.

**CLAIRE SELMAN**

www.instagram.com/claire_selman_art

Linocuts of loved places from sketches drawn on location. My South West Memories collection of prints and gifts captures the energy of the sea and sky while serving a slice of seaside nostalgia

**ALEKSANDRA JEZIORSKA X CLEVER BEETLE**

www.instagram.com/cleverbeetle

Nature-inspired ink illustrations and tin embossing, alongside the Clever Beetle project - playful, hand-illustrated resources for children.

22

**EAZY DESIGNS**

4 Langton Road, BS4 4EP
www.instagram.com/eazy.thomson

Eazy Designs specialises in line-work, calligraphy & temporary jagua tattoos. Sharing with two other artists who'll also be showing their work. Pop in to get your own unique, freestyle jagua tattoo!

W

23

**TESSA WILKINSON**

17 Wick Rd, Brislington, Bristol BS4 4HA

I am mainly a printer. I love doing lino cuts, collographs, mono prints and etching. But I also paint and work on fabric.

**ELI AND ASHA HB**

17 Wick Rd, Brislington, Bristol BS4 4HA
www.instagram.com/ashajoyart

Eli and Asha are a married couple who paint and sew and generally make nice stuff. They are inspired by CS Lewis, Wendell Berry, and the pre-raphaelites.

24

**VERNON HEWITT**

42 Wick Road, Brislington, Bristol BS4 4HB

Land and seascape artist using acrylic and sometimes oil. My work represents a naturalist style with some works of a more impressionist nature.

ST CUTHBERT'S CHURCH

Sandy Park Rd, BS4 4HQ

At the top of Sandy Park Road - the hub of the BS4 Arts Trail - this beautiful space hosts 18 artists, plus the always popular Family Art Club from Colourful Minds. See workshops page for more info.

Accessible venue.

Please note: this venue opens a bit later on Sunday 14th at 11.30am



PROPER JOB PRODUCTIONS

www.properjobproductions.co.uk

I sell exclusive prints on various mediums, coasters, magnets, tea towels, peg hooks, cards, and mugs. My inspiration is the world around me. I am a multi-genre photographer.



SIMON NEILD

trymwoodcraft.co.uk

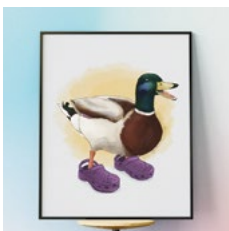
Simon has had a lifelong passion for woodturning and creates decorative, practical and tactile objects which emphasise the natural beauty of the recycled wood and fallen branches he works with.



LISA TRAVERS

www.lisatravers.co.uk

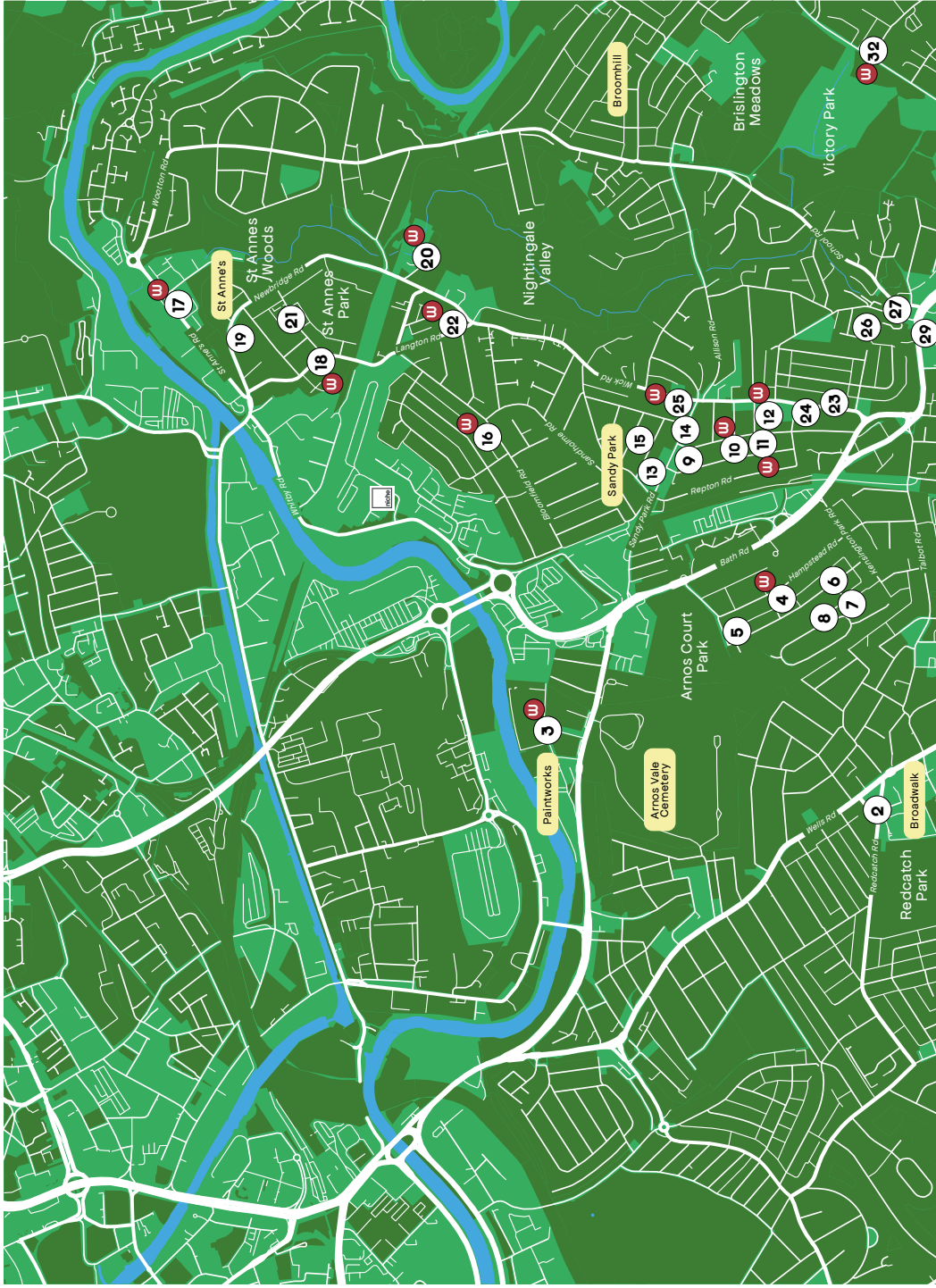
Collage, cyanotype and print celebrating the dark and twisty. Expect elements of vintage anatomy and folklore with a heavy dose of pattern.

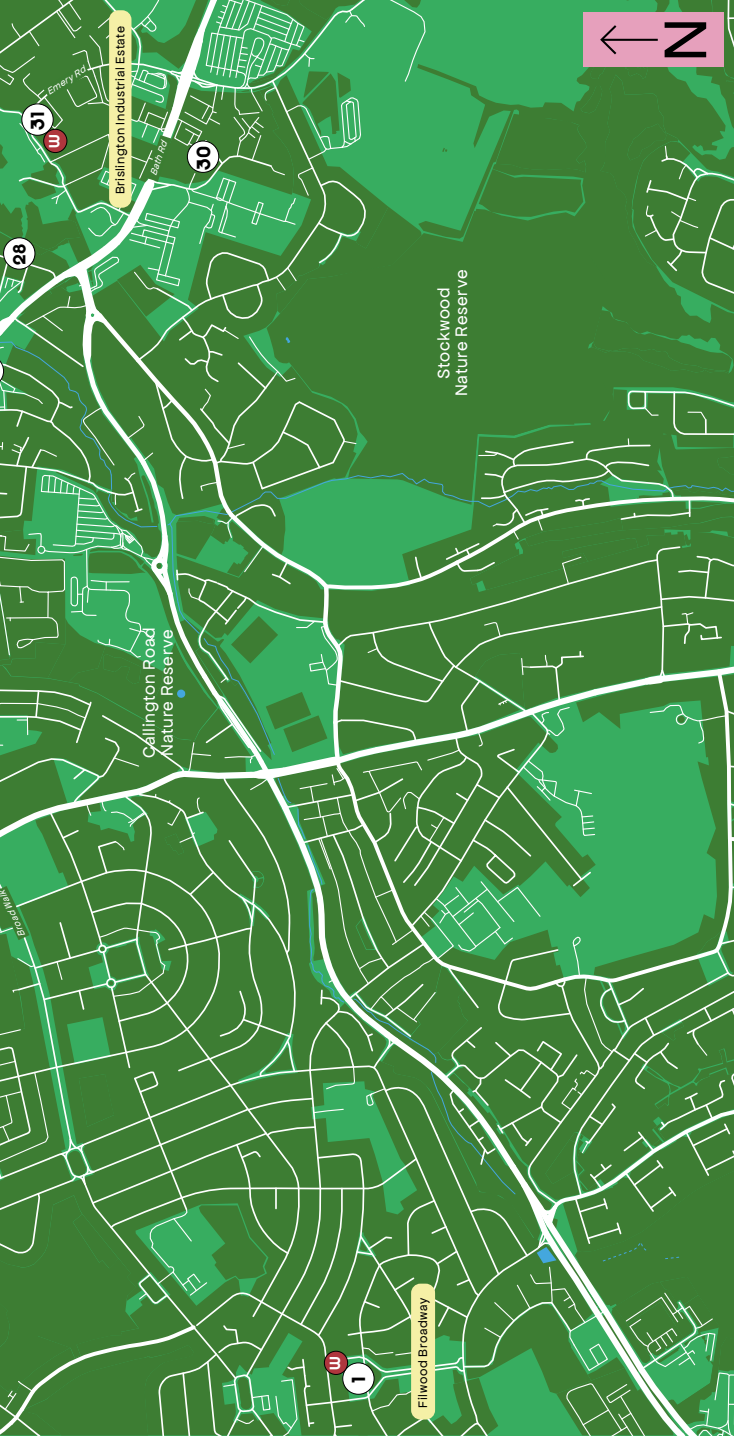


BIRDS 'N BOOTS

www.birdsnboots.com

Prints, t-shirts, and more featuring feathery friends with a touch of whimsy. Come find Snacks the Duck with his bright purple crocs, Gav the Magpie with his shiny sneakers, and many others!





BS4 ARTS TRAIL 2026

Please visit our website for a full, interactive map and artist listings: www.bs4artstrail.co.uk

○ Arts Trail Venue

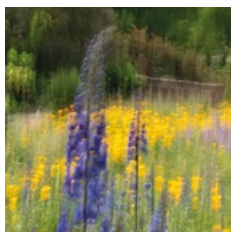
W Workshop or Demo at this venue.

 Your one stop shop for all picture framing and giclee printing in Bristol
nicheframes.co.uk

**ANU HATTI**

www.instagram.com/artistanuhatti

Inspired by Indian art and nature, I create colourful acrylic, watercolour and mixed media pieces that celebrate pattern, texture and storytelling through a contemporary lens.

**BECCA LUGER PHOTOGRAPHY**

www.beccaluger.co.uk

I am a local photographer and I use long exposures to create unique images which capture the vibrant energy and colour of the world around me, be it an urban cityscape or a natural landscapes.

**TORIGAMI**

www.instagram.com/torigamibristol

Handfolded origami decorations including light up balloons, modular designs and greeting cards.

**NEONDAISYBEADS**

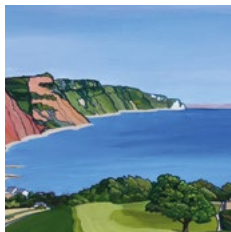
www.numonday.com/shop/neondaisybeads/

My name is Lexie, I am 14 and live in Brislington. I am autistic and have CFS so am unable to attend school. I spend time making cards, bracelets, necklaces & bag charms etc. I like to create smiles.

**KG HANDMADE**

www.kghandmade.co.uk

Functional, modern crochet with a slow fashion heart. Colourful, handcrafted bumbags, baskets, scarves and more using recycled cotton yarns. Colourful gifts made to be noticed.

**ANNABEL GLASSBY**

www.instagram.com/annabelglassby_artist

I capture Devon and Dorset's sunlit hills, cliffs and bays in bright bold acrylics and flowing shapes - to spread joy and bring back those smiles and happy memories.

**MADE BY LUCY**

www.madebylucy.com

I make affordable, unusual handmade cards, gifts and treats. Intricate tiny worlds in glass bottles, miniature museums, matchbox treasures, conjoined animals and lots of other great stuff!

**WENDY NORTON**

www.wendynorton.co.uk

Colourful, contemporary jewellery handmade in Bristol from embroidered fabric, silver and brass, using a variety of techniques. Inspired by textiles and the natural world each piece is unique.

**COLOURFUL MINDS**

www.instagram.com/colourful_minds_kids



Colourful Minds designs & delivers creative workshops for all ages, exploring art & craft in a relaxed & playful way - creating space to experiment, make a mess & discover the joy of being creative.

**NOO PRINTS 3D**

A pocket friendly mix of imaginative 3d printed items for all ages. To fidget and play with, to explore and create with. All printed using a vegetable by-product in a multiple of colours.

**FIONA CLABON ILLUSTRATION**

www.instagram.com/fionaclabonillustration

Discover Fiona's range of original botanical cyanotypes as well as her colourful cards for all occasions!

**ALL IS SUN ECO CREATIONS**

allissunecocreations.etsy.com

Unique handmade nature inspired eco heritage crafts to celebrate your individuality & brighten your day: beadwork, crochet & reclaimed leather work.

**CATHERINE LONG - BLUEBELLE ARTS**

Cyanotype artist creating sun prints inspired by nature. Using traditional and wet cyanotype techniques with flowers, ferns, leaves and photography.

**PAPER HEART PRODUCTIONS**

www.paper-heart-artwork.myshopify.com

Tiny original artworks in vintage matchboxes, framed miniatures and larger mounted originals, each one painted with love and whimsy.

**SJDPHOTO DESIGN**

www.sjdphotodesign.com

Modern artwork photography with intriguing compositions with a twist.

26

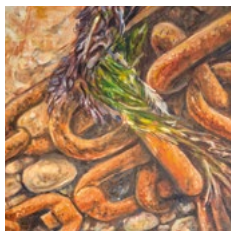


BEATA NORA VIDA

11 Frys Hill BS4 4JW
beatanoravida.my.canva.site

Beata is a scenic artist for stage and screen. Beside her professional practice she has been painting, collaging, painting murals, making dioramas and teaching herself ceramics.

27

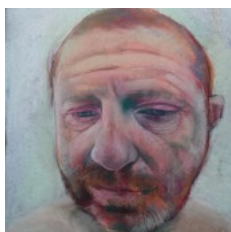


VERNON JONES

The Engine House, 8 Hollywood Road, BS4 4LF

Vernon Jones paints derelict buildings and abandoned spaces, using layered oil to evoke decay, light, and traces of human presence as evolving records of memory, change, and resilience.

28



SEAMUS DEN

10 Glenarm Road Brislington, BS4 4LW
www.instagram.com/seamusden

Local based artist exploring the human form using oil paints and pastels.

29



KAT HARVEY

Flat 23 Chapel Court Kenneth Road Brislington Bristol BS4 5BL

I create cross stitch and embroideries from my photos. Collections include: Iford Manor and Chelsea Flower Show.

30



FLOWERS HILL STUDIO

Flowers Hill Studio, 1a Flowers Hill Close, BS4 5JU
www.instagram.com/StamrodGoldfinger

Stamrod: Structural Geometry. Intricate 2D and 3D Sculptures, born from Aphantasia. A dual-aspect journey from daylight symmetry to a UV "sensory void." Mathematical beauty made physical.

21-23 Emery Rd. BS4 5PF

The Engine Room is a creative rehearsal & workshop space connected to Firebird Studios - Bristol's best band rehearsal studio! Alongside 8 fantastic artists and makers, Noods Levels will be giving young creatives hands-on access to professional DJ and recording equipment, as well as a host of music artists, for a two-hour drop-in workshop on Saturday, with the Art Cart running kid's craft workshops on Sunday. See workshops page for more info. Accessible venue.



ROGUE_BIRDS

www.instagram.com/rogue_birds/

I'm an illustrator with a passion for nature and conservation with a particular interest in birds. I love wildlife and fantasy, I draw inspiration from folklore tales, D&D and local wildlife.



HIVES AND HERBALS

www.hivesandherbals.com

Made by our bees and me! - Fresh honey - Beeswax skincare & candles - Eco gift sets



THE ART OF CHRIS SHOPLAND

cjshopland.com

I believe the world is more beautiful when we stop trying to make everyone the same. As a late-diagnosed AuDHD artist, I create for the outsiders and the 'aliens' who value curiosity over judgment.



SAMANTHA CLIFT ART

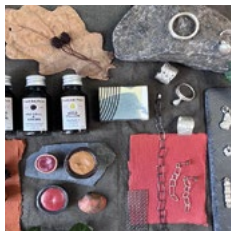
www.samanthacliftart.com

Artist working in abstract realism, painting expressive portraits of people and animals. My work explores connection, quiet strength and story through intuitive mark-making and layered colour.

**GINA BELFORD ART**

www.ginabelfordart.co.uk

I paint emotive abstracts in an intuitive way – paintings that bring a burst of colour, vibrancy and a joyful elegance.

**EARTH INK PRINT**

earthinkprint.co.uk

Artists/makers using natural and recycled materials. We create earth based inks, pigments, screenprints, paintings, handmade paper and unique one off pieces of embossed, cast and upcycled jewellery.

**POTTERY BY ESTER**

www.potterybyester.com

Colourful, handmade stoneware ceramics crafted on East St. Huggable mugs, bowls and tumblers with vibrant glazes designed to bring joy to everyday moments.

**JULIA MCMURRAY DESIGNS**

www.juliamcmurraydesigns.com

Hand made silver & brass jewellery. Contemporary and minimalist in style, from every day to special occasion pieces.

**THE GLASS LOFT**

Regency House, Dixon Road BS4 5QH
www.theglassloft.co.uk



Find your passion for glass in this beautiful teaching studio. View & buy inspiring glass art and chat with the artists. Or have a go with glass yourself in a fun introductory workshop!

SATURDAY WORKSHOPS & MORE

1

FILWOOD COMMUNITY CENTRE

15 -19 Filwood Broadway BS4 1JN

10am-4pm

FREE

Alongside our exhibition and Maker's Market, there will be free workshops, including rock painting, throughout the day. Pop in to see what's on!

3

MARTIN PARR FOUNDATION

316 Paintworks, Bristol, BS4 3AR

2pm

FREE

Join us at on Saturday 13th Jun at 2pm for an exhibition tour of our current show, Tangerine Dreams by Sophie Green.



4

LET'S MAKE ART

St Christophers Church, Hampstead Road, BS4 3HN

12pm-4pm

(Drop In - Last entry for

makers 3:30pm)

£1.50

BIG Family Mask-Making Workshop

Join Let's Make Art, Artists in Residence from We Are Family at Arnolfini, for a fun and creative family workshop as part of the BS4 Arts Trail. Come along and design your own BIG mask using a vibrant mix of materials - perfect for wearing along the trail! This drop-in session is open to all ages, so everyone can get involved and make something unique. All ages welcome - younger ones will need assistance from a grown up. We can't wait to create with you!

Book via

tickettailor.com/events/lma

LET'S MAKE ART 



10

EMMA LUCY MCARTHUR

40 Harrow Road, BS4 3NE

11am-5pm
FREE

Print your own tiny linocut on my tiny press! No booking required, just drop-in and have a go

11

ANGELA DAVIES

44 Harrow Road, BS4 3NE

3pm - 5pm
£10
Cash preferred

“Intro to print-making at home, using recycled Tetra-Pak plates. Explore sustainable hand-made print techniques using recycled Tetra-Pak plates, alongside a small group of fellow creatives. Previous art experience is helpful, although not essential. Bring a reference image (a photo or sketch), or play in the session with free mark making, patterns and textures to create a small print to take home.

Space for 4-6 adults.

Pre-booking required, please email angeladavies.design@gmail.com
Drop-ins accepted during workshop times if there is space.

12

FRIENDS OF HOLYMEAD PRIMARY SCHOOL

The Hub, Holymead Primary School, Rossall Road, BS4 3NR

11am-3pm
FREE

Let your imagination run wild! Design your very own mascot to represent you. It can be anything you like – a flying snail, a fierce dragon a robot if you prefer. Use the shapes and colours around you to help you dream up a character that belongs right here in BS4.



17

ALARIC HOBBS

St Anne's House, St Anne's Road, BS4 4AB

11am-4pm
FREE

They Loved this Spot explores rest, rough sleeping, hostile architecture and agency within public spaces & community. Visitors are invited to build their own maquettes of benches and explore themes around rest and public space.

17**BRIZ X BORG X KELHAM**

St Anne's House, St Anne's Road, BS4 4AB

Drop In
FREE

A chance to help create a mural artwork to be permanently displayed at Ironmould Lane – the home of the Brislington Foxes! Help artist and designer Jonathan Kelham and Ken Borg on their latest art project celebrating all things Brislington as part of their art residency at Brislington FC.

**18****WENDY CALDER CERAMICS**

62 Arlington Rd, St. Annes, Bristol BS4 4AJ

Drop In 11am-12pm & 2pm-3pm
Free to have a go, or have your
vessel glazed & fired for £8

'Have a go' wheel sessions.
Fancy having a go on the potter's wheel?
Throw a small vessel under Wendy's expert guidance.

22**EAZY DESIGNS**

4 Langton Road, BS4 4EP

Drop-in any time
Prices from £5

Get your own freestyle, temporary Jagua tattoo made from natural ingredients. Similar to henna/mendhi, they're made by carefully applying a gel with extracts of the jagua flower to create a deep blue stain on the skin that lasts 1-3 weeks. Each design is freestyle & unique. Suitable for all ages, but under 16s must have parental consent.

25**COLOURFUL MINDS**

St Cuthbert's Church, Sandy Park Rd, BS4 4HQ

Drop-in 12pm-3pm
FREE

Family Art Club – come make a Woven Flower with us! Great for ages 5+ (younger ones will need their grown ups help and supervision)

31**NOODS LEVELS**

The Engine Room - 21-23 Emery Rd. BS4 5PF

Drop-in 11am-1pm
FREE

Noods Levels is a Bristol-based not-for-profit organisation bridging industry with community. Alongside delivering creative projects, they run music education through their mobile and in-person music studio, TREAD, giving young creatives hands-on access to professional DJ and recording equipment.

Drop in and have a go — they'll be bringing their equipment, as well as a host of music artists, for a two-hour drop-in session.

32

THE GLASS LOFT

Regency House BS4 5QH

11am-1pm

£12

Glass fusing workshops

Learn introductory creative glass techniques, try your hand cutting glass and create your own decorative glass pieces in my dedicated glass studio. These sessions are aimed at adult beginners, though well-behaved children over the age of 12 are welcome with a participating adult. Work produced will be kiln fired for picking up a few days later, or posted out by arrangement.

Playing with Clear Glass

Learn to cut glass and create your own decorative glass shapes and patterns for kiln firing

2pm-3pm

£7

Book via theglassloft.co.uk/class/workshops to guarantee your place. Drop-ins welcome if there's space.

Please note - studio is only accessible via stairs.

SUNDAY WORKSHOPS & MORE

3

MARTIN PARR FOUNDATION

316 Paintworks, Bristol, BS4 3AR

11am

FREE

Join us at 11am on Sunday 14th June for a behind the scenes look at the Martin Parr and MPF studio, including many prints, books and an insight into Martin Parr's working photographic process.

Booking required via the MPF website due to limited space.

4

LET'S MAKE ART

St Christophers Church, Hampstead Road, BS4 3HN

12pm-4pm

(Drop In - Last entry for makers 3:30pm)

£1.50

BIG Family Mask-Making Workshop

Join Let's Make Art, Artists in Residence from We Are Family at Arnolfini, for a fun and creative family workshop as part of the BS4 Arts Trail. Come along and design your own BIG mask using a vibrant mix of materials - perfect for wearing along the trail! This drop-in session is open to all ages, so everyone can get involved and make something unique. All ages welcome - younger ones will need assistance from a grown up. We can't wait to create with you!

Book via tickettailor.com/events/ima

10

EMMA LUCY MCARTHUR

40 Harrow Road, BS4 3NE

11am-5pm
FREE

Print your own tiny linocut on my tiny press! No booking required, just drop-in and have a go

12

FRIENDS OF HOLYMEAD PRIMARY SCHOOL

The Hub, Holymead Primary School, Rossall Road, BS4 3NR

11am-3pm
FREE

Let your imagination run wild! Design your very own mascot to represent you. It can be anything you like – a flying snail, a fierce dragon a robot if you prefer. Use the shapes and colours around you to help you dream up a character that belongs right here in BS4.

17

ALARIC HOBBS

St Anne's House, St Anne's Road, BS4 4AB

11am-4pm
FREE

They Loved this Spot explores rest, rough sleeping, hostile architecture and agency within public spaces & community. Visitors are invited to build their own maquettes of benches and explore themes around rest and public space.

17

BRIZ X BORG X KELHAM

St Anne's House, St Anne's Road, BS4 4AB

Drop In
FREE

A chance to help create a mural artwork to be permanently displayed at Ironmould Lane – the home of the Brislington Foxes! Help artist and designer Jonathan Kelham and Ken Borg on their latest art project celebrating all things Brislington as part of their art residency at Brislington FC.

18

WENDY CALDER CERAMICS

62 Arlington Rd, St.Annes, Bristol BS4 4AJ

Drop In 11am-12pm & 2pm-3pm
Free to have a go, or have your vessel glazed & fired for £8

'Have a go' wheel sessions.
Fancy having a go on the potter's wheel?
Throw a small vessel under Wendy's expert guidance."

22

EAZY DESIGNS

4 Langton Road, BS4 4EP

Drop-in any time
Prices from £5

Get your own freestyle, temporary Jagua tattoo made from natural ingredients. Similar to henna/mendhi, they're made by carefully applying a gel with extracts of the jagua flower to create a deep blue stain on the skin that lasts 1-3 weeks. Each design is freestyle & unique. Suitable for all ages, but under 16s must have parental consent.

25

COLOURFUL MINDS

St Cuthbert's Church, Sandy Park Rd, BS4 4HQ

Drop-in 12pm-3pm
FREE

Family Art Club - come make a Woven Flower with us! Great for ages 5+ (younger ones will need their grown ups help and supervision)



31

THE ART CART

The Engine Room - 21-23 Emery Rd. BS4 5PF

Drop-in 11am-3pm
FREE

Paper Cup Telephones + Spinning Tops Use paint-pens to decorate a dizzying spinning top, or create your own take-home telephone! Activities are planned with ages 4-10 in mind.



32

THE GLASS LOFT

Regency House BS4 5QH

2pm-4pm
£18

Make a Fused Glass Suncatcher

Learn to cut glass, then use coloured glass to make your own beautiful hanging suncatcher. Aimed at adult beginners, though well-behaved children over the age of 12 are welcome with a participating adult.

Book via theglassloft.co.uk/class/workshops to guarantee your place.

Please note - studio is only accessible via stairs.



THE PUKKA PENCOCK

Join us for a special
All Day Brunch
For the BS4 Arts Trail!

13 & 14 June | 11am - 4pm

65 Sandy Park Rd BS4 3PQ
Scan for menu & bookings
thepukkapecock.co.uk | 07774356106

the LANGTON BRISTOL

Open Monday - Friday 9am - 10pm
Saturday 10am - 12am
Sunday 12 - 10pm

the LANGTON EVENT SPACES

Unique Event Spaces
for Your Next Special Occasion

the LANGTON CAFE ESTD 1991

Coffee | Breakfast | Brunch

The Langton
Wellness Hub

Move | Breathe | Connect

THE LANGTON

TRADITIONAL PUB
KITCHEN AND GARDEN

Langton Court Road, BS4 4EG
thelangtonbristol.co.uk

WINDMILL HILL MARKET

OVER 50 STALLS

DESIGNER MAKERS • LIVE MUSIC • CAFE
STREET FOOD • LOCAL PRODUCERS • TAP ROOM

SATURDAYS | 10AM-3PM
21 MAR 18 APR 9 MAY 27 JUN

SUPPORTED BY
Boardwalk

WINDMILL HILL CITY FARM BS3 4EA
INSTA: WINDMILL_HILL_MARKET

LOST AND GROUNDED BREWERS

ESTD 2016

WELLES

KELLER PILS

HOP-ON-BOARD FALLACY

@lostandgrounded +44 (0)117 332 7690
@lostandgroundedbrewers info@lostandgrounded.co.uk
www.lostandgrounded.co.uk 91 Whitby Road, Bristol, BS4 4AR



Established in Bristol since 1832, at Taylor Brothers we are proud of our reputation as the go to specialists to produce beautiful print with enhancing finishes. Whether you want a single leaf or a case bound book, printed digitally or lithographically, we have a dedicated team ready to help.

Taylor Brothers Bristol Ltd, Units 5 & 6 Avon Valley Business Park BS4 4EU

0117 924 5452 | taylorbros.uk.com | @taylor_brothers

Real family removals company taking the stress out of your move

Why choose us?

- ✓ No hidden costs
- ✓ Fully insured for peace of mind
- ✓ Expert furniture handling

Let's get moving!

0117 2032010



Scan me for a quote



masonmovesbristol.com



BS4 ARTS

TRAIL

SATURDAY 13TH JUNE

10:00 - 16:00

Filwood Community Centre's Temporary Space
15-19 Filwood Broadway, Bristol, BS4 1JL

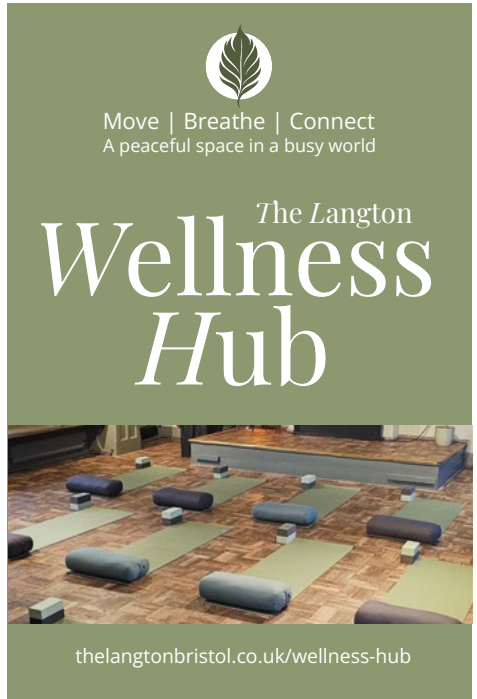
**Exhibition of Local Artists, Craft Stalls
and Workshops**

As part of the BS4 Arts Trail, local Knowle West artists will be exhibiting their work in a collaborative exhibition. Come see what they've been working on, join in on a workshop and wander around our pop-up makers market.

To get involved and for more info, contact
amber@filwoodcentre.org.uk or
 call/message/WhatsApp 07518739186








Move | Breathe | Connect
A peaceful space in a busy world

The Langton
Wellness Hub



thelangtonbristol.co.uk/wellness-hub



St Anne's & Broomhill

GREEN WEEK

Join us for a vibrant celebration of our wonderful green spaces, climate action and community spirit in St Anne's and Broomhill!
in collaboration with BS4 Arts Trail

6 - 19 June

2026





Free expert mortgage advice From start to finish

We compare 1000's of products from across the market.

Find the right mortgage for your circumstances

0117 251 5440 | info@langleyh.co.uk | langleyhousemortgages.co.uk
31 Kent House, Prince Street BS1 4PH | Proud of our 5 star Google Reviews

Your home may be repossessed if you do not keep up repayments on your mortgage

An interview with...

Rupert Morley,
Managing Director at

niche



Niche have been serving Bristol's artists for over 30 years. From their first small framing shop in Stokes Croft, they soon started offering large-format scanning and museum-quality printing on paper and canvas alongside their speciality framing, ultimately moving to their current shop on Zetland Road and expanding into a custom workshop on the Eldonwall trading estate, right here in BS4.

Supporters of the BS4 Arts Trail since our first event in 2023, Niche have framed and/or printed many of the works you'll see on the trail.

Becca chatted to owner/manager/all round great guy, Rupert Morley to discover more about what Niche do.

You started out as an artist, what led to you working at - and then running - Niche?

I originally came to know Niche when I had a space in Jamaica St Artist Studios off Stokes Croft. I got to know Ted, who ran the scan department at the time, and we worked together on some projects of mine. When he said he was moving on, I applied for the job. And the rest is history as they say. That was late 2007- early 2008 I think. We have slowly grown in size since then, navigated COVID and moved premises. It's been quite a ride.

We're so grateful for all your support of the BS4 Arts Trail and our artists over the past few years! Why did you decide to sponsor us?

We want to stay involved with the Bristol art scene by any means possible - we owe our longevity to Bristol's thriving studios and the amazing artists and individuals we've met along the way. It's an absolute pleasure to be able to serve the creative community, and arts trails are such a good way to get work seen by the public. So when you popped-up in BS4 we jumped at the chance to be involved.

As you know, I come to you for all my framing because, as well as the excellent craftsmanship, I really value your expertise. What do you think is the most important thing people should consider when framing artwork?

It sounds kind of obvious, but we always encourage people to choose a frame that best compliments the artwork, rather than try to match it to home decoration or furnishings. Ideally, you only want to frame something once, and if you move, redecorate or change the location of the artwork, you might not like the finish any more. So that's a good place to start.

Framing is a specialist skill and it can feel like a big expense, so people often try to keep costs down by using cheaper mass-produced frames. What would you say are the benefits of going to a specialist framer?

I'd say longevity first, and conserving the piece in the best way possible. We've had Banksy prints come through over the years that have been masking-taped into Ikea frames, as no one really knew what they could potentially be worth back in the day. Some have had to be sent to conservators to get treated for damage, which costs more than getting it framed properly in the first place.

So getting the best for any piece early on is important, as it may be valuable later down the line - monetarily or sentimentally!

What's next for Niche?

We have just opened a new little shop in BS5, at 278 Church Road. We are so excited to have a second store, and to serve a different area of Bristol. We have had some crazy increased running costs on our unit in BS4, so we are hoping that we can cover them this way. Myself and my business partner Joe will be there for the first part, just to get it going. Fingers crossed it works out!

Have you got something you want framed - maybe something you've bought on the trail? Whether it's a work on paper or canvas, a piece of textile art or memorabilia, or something more 3D, Niche can offer you their expert advice and insight to choose the right frame for your needs. You can collect your framed piece from either of their shops, or even the BS4 workshop - no need to go far!

10%
OFF

Trail visitors get a 10% discount - just bring this guide to your consultation!

info@nicheframes.co.uk 0117 9422213





Illustration by @paperheartproductions

Thinking of buying, selling or letting in BS4?

For a truly unique, personal service coupled with an exceptional level of local knowledge and expertise contact Stacey on **07900 007 550**.

Google ★★★★★ “I’ve bought and sold a lot of properties and have never come across an agent like Stacey at Eveleighs. She has handled both a purchase and a sale for us now. Knowledgeable, personable, highly competent and effective, and cares a great deal about the buyers and sellers as people too, which really is the gold standard of professional integrity in this industry. She is an absolute diamond, don’t even consider using anyone else.” Ian H



Eveleighs are an independent Estate and Letting Agency specialising in Brislington, Knowle, Saltford, Keynsham, Whitchurch, Stockwood and the surrounding areas.

